

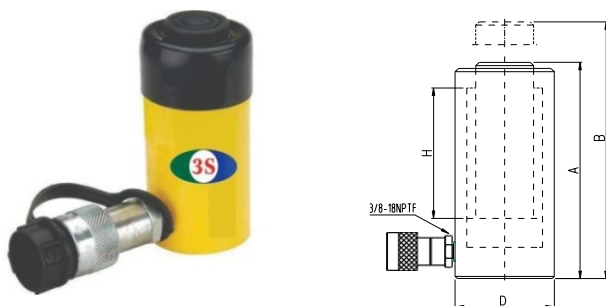
Cylinders
Lifting Products
Pumps
Control Valves
Heavy Lifting Technology
Presses
Pullers
Speciality Tools
Cutters
Bolting Tools
Skid Rollers



ENGINEERING SOLUTIONS

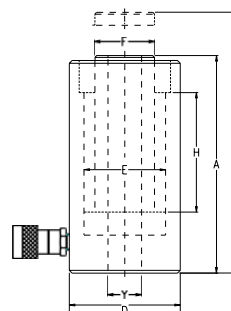


LIFTING & BOLTING SOLUTIONS



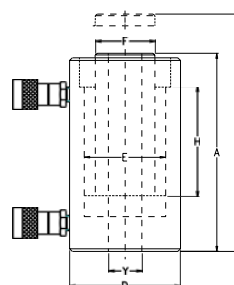
SRC SINGLE ACTING JACK

Capacity ton(KN)	Stroke H(mm)	Model	Effective area (mm ²)	Oil capacity (mm ³)	Collapsed height A(mm)	Extended height B(mm)	Outside diameter D(mm)	Weight (kg)
5 (45)	16	SRC5-16	6.5	10	41	57	38	1
	25	SRC5-25		16	110	135		1.2
	76	SRC5-76		50	165	241		1.5
	127	SRC5-127		83	215	342		1.9
	177	SRC5-177		115	273	450		2.4
	232	SRC5-232		151	323	555		2.8
10 (101)	26	SRC10-26	14.5	38	89	115	57	1.8
	54	SRC10-54		78	121	175		2.3
	105	SRC10-105		152	171	276		3.3
	156	SRC10-156		226	247	403		4.4
	203	SRC10-203		294	298	501		5.4
	257	SRC10-257		373	349	606		6.4
	304	SRC10-304		441	400	704		6.8
	356	SRC10-356		516	450	806		8.2
15 (142)	25	SRC15-25	20.3	51	124	149	69	3.3
	51	SRC15-51		104	149	200		4.1
	101	SRC15-101		205	200	301		5
	152	SRC15-152		308	271	423		6.8
	203	SRC15-203		411	322	525		8.2
	254	SRC15-254		516	373	627		9.5
	305	SRC15-305		619	423	728		10.9
	356	SRC15-356		723	474	830		11.8
25 (232)	26	SRC25-26	33.2	86	139	165	85	5.9
	50	SRC25-50		166	165	215		6.4
	102	SRC25-102		339	215	317		8.2
	158	SRC25-158		525	273	431		10
	210	SRC25-210		697	323	533		12.2
	261	SRC25-261		867	374	635		14.1
	311	SRC25-311		1033	425	736		16.3
	362	SRC25-362		1202	476	838		17.7
30 (295)	209	SRC30-209	42.1	880	387	596	101	18.1
50 (498)	51	SRC50-51	71.2	362	176	227	127	15
	101	SRC50-101		719	227	328		19.1
	159	SRC50-159		1131	282	441		23.1
	337	SRC50-337		2399	460	797		37.6
75 (718)	156	SRC75-156	102.6	1601	285	441	146	29.5
	333	SRC75-333		3417	492	825		59
100 (933)	168	SRC100-168	133.3	2239	357	525	177	59
		SRC100-260			449	709		



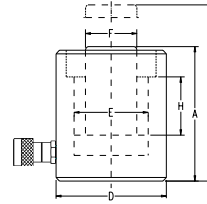
SRCH SINGLE ACTING HOLLOW JACK

Capacity ton(KN)	Stroke H(mm)	Model	Effective area (cm ²)	Oil capacity (cm ³)	Collapsed height A(mm)	ESX Tende d height B(mm)	Outside diameter rD (mm)	Bore diameter (mm)	Plunger diameter r F(mm)	Hole diameter r Y (mm)	Weight kg
13 (125)	8	SRCH13-8	17.9	14	55	63	69	54	35.1	19.6	1.5
	42	SRCH13-42	17.9	75	120	162	69	54	35.1	19.6	2.8
	76	SRCH13-76	17.9	136	184	260	69	54	35.1	19.6	4.4
20 (215)	49	SRCH20-49	30.7	150	162	211	98	73	54.1	26.9	7.7
	155	SRCH20-155	30.7	476	306	461	98	73	54.1	26.9	14.1
30 (326)	64	SRCH30-64	46.6	298	178	242	114	89	63.5	33.3	10.9
	155	SRCH30-155	46.6	722	330	485	114	89	63.5	33.3	21.8
60 (576)	76	SRCH60-76	82.3	626	247	323	159	124	91.9	53.8	28.1
	153	SRCH60-153	82.3	1259	323	476	159	124	91.9	53.8	35.4
100 (931)	76	SRCH100-76	133.0	1011	254	330	212	165	127.0	79	63.0



SRRH DOUBLE ACTING HOLLOW JACK

Capacity ton(KN)	Stroke H (mm)	Model	Cylinder max capacity(KN)		Effective area (cm ²)		Oil capacity (cm ³)		Collapsed height A(mm)	Extended height B(mm)	Outside diameter (mm)	Bore diameter E(mm)	Plunger diameter F(mm)	Hole diameter (mm)	Weight kg
			Advance	Retract	Advance	Retract	Advance	Retract							
30	178	SRRH30-178	326	213	46.6	30.4	829	541	330	508	114	89	65	33.3	21
	258	SRRH30-258	326	213	46.6	30.4	1202	784	431	689	114	89	65	33.3	27
60	89	SRRH60-89	576	380	82.3	54.2	733	482	247	336	159	124	92	53.8	28
	166	SRRH60-166	576	380	82.3	54.2	1366	900	323	489	159	124	92	53.8	35
	257	SRRH60-257	576	380	82.3	54.2	2115	1393	438	695	159	124	92	53.8	45
100	38	SRRH100-38	931	612	133	87.4	505	333	165	203	212	165	127	79.2	33



RSM / SRCs SINGLE ACTING CYLINDER

Capacity ton (KN)	Stroke H(mm)	Model	Effective area (cm ²)	Oil capacity (cm ³)	Collapsed height A(mm)	ESXTende d height B(mm)	Outside diameter D(mm)	Bore diameter E(mm)	Plunger diameter F(mm)	Weight (Kg)
5(45)	6	RSM5-6	6.5	4	32	38	58×41	28.7	19.5	1.0
10(101)	12	RSM10-12	14.5	18	42	54	82×55	42.9	21.5	1.4
20(201)	11	RSM20-11	28.7	32	51	62	101×76	60.5	27.5	3.1
30(295)	13	RSM30-13	42.1	55	58	71	117×95	73.2	39.5	4.5
50(435)	16	RSM50-16	62.2	99	66	82	140×114	89	44.5	6.8
75(714)	16	RSM75-16	102	164	79	95	165×139	114	62	11.3
100(886)	16	RSM100-16	126.6	203	85	101	178×153	127	65	14.5
150(1386)	16	RSM150-16	198.1	317	100	116	215×190	159	80	26.3
10(101)	38	SRCs10-38	14.5	55	88	126	69	42.9	38.1	4.1
20(201)	45	SRCs20-45	28.7	129	98	143	92	60.5	50.8	5.0
30(295)	62	SRCs30-62	42.1	261	117	179	101	73.2	66.5	6.8
50(435)	60	SRCs50-60	62.2	373	122	182	124	89	69.8	10.9
100(886)	57	SRCs100-57	126.6	722	141	198	165	127	92.2	22.7





SHCL SINGLE ACTING LOCKNUT CYLINDER

Capacity ton (KN)	Stroke H(mm)	Model	Effective area cm ²	Oil capacity ycm ³	Collapsed height A(mm)	Extended height B(mm)	Outside diameter D (mm)	Bore diameter E (mm)	Plunger diameter F (mm)	Nut heights (mm)	Weight (kg)
50 (496)	50	SHCL50-50	70.9	355	164	214	125	95	Tr95x4	38	15
	100	SHCL50-100	70.9	709	214	314	125	95	Tr95x4	38	20
	150	SHCL50-150	70.9	1064	264	414	125	95	Tr95x4	38	25
	200	SHCL50-200	70.9	1418	314	514	125	95	Tr95x4	38	30
	250	SHCL50-250	70.9	1773	364	614	125	95	Tr95x4	38	35
100 (929)	300	SHCL50-300	70.9	2127	414	714	125	95	Tr95x4	38	40
	50	SHCL100-50	132.7	664	187	237	165	130	Tr130x6	45	30
	100	SHCL100-100	132.7	1327	237	337	165	130	Tr130x6	45	39
	150	SHCL100-150	132.7	1991	287	437	165	130	Tr130x6	45	48
	200	SHCL100-200	132.7	2654	337	537	165	130	Tr130x6	45	56
150 (1406)	250	SHCL100-250	132.7	3318	387	637	165	130	Tr130x6	45	64
	300	SHCL100-300	132.7	3981	437	737	165	130	Tr130x6	45	73
	50	SHCL150-50	200.9	1005	209	259	207	160	Tr160x6	47	53
	100	SHCL150-100	200.9	2010	259	359	207	160	Tr160x6	47	66
	150	SHCL150-150	200.9	3014	309	459	207	160	Tr160x6	47	78
200 (1880)	200	SHCL150-200	200.9	4019	359	559	207	160	Tr160x6	47	92
	250	SHCL150-250	200.9	5024	409	659	207	160	Tr160x6	47	104
	300	SHCL150-300	200.9	6029	459	759	207	160	Tr160x6	47	117
	50	SHCL200-50	268.6	1343	243	293	237	185	Tr185x6	52	83
	100	SHCL200-100	268.6	2687	293	393	237	185	Tr185x6	52	98
250 (2540)	150	SHCL200-150	268.6	4030	343	493	237	185	Tr185x6	52	117
	300	SHCL200-300	268.6	8060	493	793	237	185	Tr185x6	52	170
	50	SHCL250-50	362.8	1814	249	299	275	215	Tr215x6	58	116
	100	SHCL250-100	362.8	3629	299	399	275	215	Tr215x6	58	135
	150	SHCL250-150	362.8	5443	349	499	275	215	Tr215x6	58	162
300 (3165)	300	SHCL250-300	362.8	10886	499	799	275	215	Tr215x6	58	234
	50	SHCL300-50	452.2	2261	295	345	310	240	Tr240x6	65	173
	100	SHCL300-100	452.2	4522	345	445	310	240	Tr240x6	65	203
	150	SHCL300-150	452.2	6782	395	545	310	240	Tr240x6	65	233
	300	SHCL300-300	452.2	13565	545	845	310	240	Tr240x6	65	323
400 (3859)	50	SHCL400-50	551.2	2756	335	385	350	265	Tr265x6	75	250
	100	SHCL400-100	551.2	5513	385	485	350	265	Tr265x6	75	225
	150	SHCL400-150	551.2	8269	435	585	350	265	Tr265x6	75	327
	300	SHCL400-300	551.2	16538	585	885	350	265	Tr265x6	75	441
	500 (5118)	50	SHCL500-50	731.1	3653	375	425	400	305	Tr305x6	85
100		SHCL500-100	731.1	7302	425	525	400	305	Tr305x6	85	415
150		SHCL500-150	731.1	10959	475	625	400	305	Tr305x6	85	466
300		SHCL500-300	731.1	20930	625	925	400	305	Tr305x6	85	617
600 (5984)		50	SHCL600-50	854.8	4277	395	445	430	330	Tr330x6	95
	100	SHCL600-100	854.8	8554	445	545	430	330	Tr330x6	95	505
	150	SHCL600-150	854.8	12830	495	645	430	330	Tr330x6	95	562
	300	SHCL600-300	854.8	25650	645	945	430	330	Tr330x6	95	737
	800 (8145)	50	SHCL800-50	1163.5	5818	455	505	505	385	Tr385x6	105
100		SHCL800-100	1163.5	11636	505	605	505	385	Tr385x6	105	789
150		SHCL800-150	1163.5	17453	555	705	505	385	Tr385x6	105	870
300		SHCL800-300	1163.5	34907	705	1005	505	385	Tr385x6	105	1110
1000 (10160)		50	SHCL1000-50	1451.4	7257	495	545	560	430	Tr430x6	118
	150	SHCL1000-150	1451.4	21772	595	745	560	430	Tr430x6	118	1141
	300	SHCL1000-300	1451.4	73544	745	1045	560	430	Tr430x6	118	1430



HCLP THIN LOCK NUT CYLINDER

Capacity ton(kN)	Stroke H(mm)	Model	Effective area (cm ²)	Oil capacity (cm ³)	Collapsed height A(mm)	Extended height B(mm)	Outside diameter D(mm)	Bore diameter E(mm)	Plunger diameter F (mm)	Nut height S(mm)	Weight kg
50(606)	50	HCLP50	86.6	432	125	175	140	105	Tr105×4	30	15
100(1001)	50	HCLP100	143.1	715	137	187	175	135	Tr135×6	32	26
150(1588)	45	HCLP150	226.8	1021	148	193	220	170	Tr170×6	42	44
200(2198)	45	HCLP200	283.4	1275	155	200	245	190	Tr190×6	44	57
250(2540)	45	HCLP250	362.9	1633	159	204	275	215	Tr215×6	46	74
400(3858)	45	HCLP400	551.3	2481	178	223	350	265	Tr265×6	58	134
500(5111)	45	HCLP500	730.2	3286	192	237	400	305	Tr305×6	65	189

SRTC SINGLE ACTING EXTRA HIGH PRESSURE THIN CYLINDER

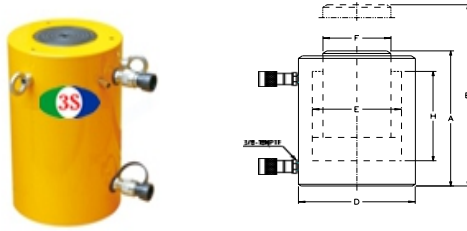


Capacity ton (kN)	Stroke H(mm)	Model	Effective area (cm ²)	Oil capacity (cm ³)	Collapsed height A(mm)	ESXTended height B (mm)	Outside diameter (mm)	Bore diameter E(mm)	Return	Weight kg
5	10	SRTC05	3.46	34.6	30	35	60	21	Load return	0.67
10	10	SRTC10	7.07	70.7	30	40	70	30	Load return	0.9
25	10	SRTC25	17.34	173.4	30	40	90	47	Load return	1.49
50	10	SRTC50	38.46	384.6	30	40	118	70	Load return	2.43
100	10	SRTC100	69.36	693.6	33	43	152	94	Load return	3.81
150	10	SRTC150	105.63	1056.3	34	44	180	116	Load return	5.88
200	10	SRTC200	136.79	1367.9	35	45	204	132	Load return	8.15



SHCG SINGLE ACTING HIGH TONNAGE CYLINDER

Capacity ton (KN)	Stroke	Model	Effective area cm ²	Oil capacity cm ³	Collapsed height	Extended height	Outside diameter	Bore diameter	Plunger diameter	Weight kg
	H(mm)				A(mm)	B(mm)	D(mm)	E(mm)	F(mm)	
50	50	SHCG50-50	78.5	392.5	162	212	140	100	70	17
	100	SHCG50-100	78.5	785	212	312	140	100	70	21
	150	SHCG50-150	78.5	1177.5	262	412	140	100	70	27
	200	SHCG50-200	78.5	1570	312	512	140	100	70	32
	250	SHCG50-250	78.5	1962.5	362	612	140	100	70	36
100	300	SHCG50-300	78.5	2355	412	712	140	100	70	39
	50	SHCG100-50	153.9	769	182	232	180	140	100	32
	100	SHCG100-100	153.9	1539	232	332	180	140	100	40
	150	SHCG100-150	153.9	2308	282	432	180	140	100	48
	200	SHCG100-200	153.9	3077	332	532	180	140	100	56
150	250	SHCG100-250	153.9	3846	382	632	180	140	100	64
	300	SHCG100-300	153.9	4615	432	732	180	140	100	72
	50	SHCG150-50	201	1005	196	246	216	160	115	42
	100	SHCG150-100	201	2010	246	346	216	160	115	52
	150	SHCG150-150	201	3014	296	446	216	160	115	62
200	200	SHCG150-200	201	4019	346	546	216	160	115	72
	250	SHCG150-250	201	5024	396	646	216	160	115	72
	300	SHCG150-300	201	6029	446	746	216	160	115	91
	50	SHCG200-50	314	1570	216	266	268	200	150	62
	150	SHCG200-150	314	4710	316	466	268	200	150	92
250	200	SHCG200-200	314	6280	366	566	268	200	150	107
	300	SHCG200-300	314	9420	466	766	268	200	150	137
	100	SHCG250-100	363	3629	265	365	285	215	165	123
300	150	SHCG250-150	363	5443	335	485	285	215	165	141
	200	SHCG250-200	363	7257	385	585	285	215	165	159
	300	SHCG250-300	363	10886	485	785	285	215	165	195
400	100	SHCG300-100	452	4522	362	462	320	240	190	237
	150	SHCG300-150	452	6782	412	562	320	240	190	261
	200	SHCG300-200	452	9043	462	662	320	240	190	285
	300	SHCG300-300	452	13564	562	862	320	240	190	333
500	100	SHCG400-100	572	5723	425	525	367	270	220	293
	150	SHCG400-150	572	8584	475	625	367	270	220	332
	200	SHCG400-200	572	11445	525	725	367	270	220	362
	300	SHCG400-300	572	17168	625	925	367	270	220	421
600	100	SHCG500-100	707	7065	469	569	400	300	240	316
	150	SHCG500-150	707	10597	519	669	400	300	240	480
	200	SHCG500-200	707	14130	569	869	400	300	240	433
	300	SHCG500-300	707	21195	669	969	400	300	240	599
	500	SHCG500-500	707	35325	869	1369	400	300	240	782
800	100	SHCG600-100	855	8548	479	549	445	330	270	791
	150	SHCG600-150	855	12823	529	679	445	330	270	565
	200	SHCG600-200	855	17097	579	779	445	330	270	637
	300	SHCG600-300	855	25646	679	979	445	330	270	701
	500	SHCG600-500	855	42723	879	1379	445	330	270	815
1000	100	SHCG800-100	1194	11940	524	624	550	390	320	766
	150	SHCG800-150	1194	17910	574	724	550	390	320	868
	200	SHCG800-200	1194	23880	624	824	550	390	320	996
	300	SHCG800-300	1194	35820	724	1024	550	390	320	1058
	500	SHCG800-500	1194	59699	924	1424	550	390	320	1274
1000	100	SHCG1000-100	1451	14515	614	714	600	430	350	1022
	150	SHCG1000-150	1451	21772	664	814	600	430	350	1194
	200	SHCG1000-200	1451	29029	714	914	600	430	350	1267
	300	SHCG1000-300	1451	43544	814	1114	600	430	350	1486



SHCR DOUBLE ACTING HIGH TONNAGE CYLINDER

Capacity ton (KN)	Stroke H(mm)	Model	Effective area		Oil capacity		Collapsed height A(mm)	ESXTended height B(mm)	Outside diamete D(mm)	Bore diamete E(mm)	Plunger diamete F(mm)	Weight kg
			Advance	RetSRAct	Advance	RetSRAct						
			cm ²		cm ³							
50	50	SHCR50-50	78.5	40	392.5	200	193	243	140	100	70	18
	100	SHCR50-100	78.5	40	785	400	243	343	140	100	70	23
	150	SHCR50-150	78.5	40	1177.5	600	293	443	140	100	70	28
	200	SHCR50-200	78.5	40	1570	800	343	543	140	100	70	33
	250	SHCR50-250	78.5	40	1962.5	1000	393	643	140	100	70	38
100	300	SHCR50-300	78.5	40	2355	1200	443	743	140	100	70	42
	50	SHCR100-50	153.9	75.4	769	377	208	258	180	140	100	34
	100	SHCR100-100	153.9	75.4	1539	754	258	358	180	140	100	42
	150	SHCR100-150	153.9	75.4	2308	1131	308	458	180	140	100	50
	200	SHCR100-200	153.9	75.4	3077	1508	358	558	180	140	100	58
150	250	SHCR100-250	153.9	75.4	3846	1885	408	658	180	140	100	66
	300	SHCR100-300	153.9	75.4	4615	2262	458	758	180	140	100	74
	50	SHCR150-50	201	97.1	1005	486	237	287	216	160	115	47
	100	SHCR150-100	201	97.1	2010	971	287	337	216	160	115	57
	150	SHCR150-150	201	97.1	3014	1457	337	387	216	160	115	67
200	200	SHCR150-200	201	97.1	4019	1943	387	487	216	160	115	77
	250	SHCR150-250	201	97.1	5024	2429	437	587	216	160	115	87
	300	SHCR150-300	201	97.1	6029	2914	487	687	216	160	115	97
	50	SHCR200-50	314	137.4	1570	687	265	315	268	200	150	82
	150	SHCR200-150	314	137.4	4710	2061	365	515	268	200	150	112
250	200	SHCR200-200	314	137.4	6280	2748	415	615	268	200	150	127
	300	SHCR200-300	314	137.4	9420	4122	515	815	268	200	150	157
	100	SHCR250-100	363	149	3629	1619	323	423	285	215	165	123
	150	SHCR250-150	363	149	5443	2429	373	523	285	215	165	141
	200	SHCR250-200	363	149	7257	3238	423	623	285	215	165	159
300	300	SHCR250-300	363	149	10886	4857	523	823	285	215	165	195
	100	SHCR300-100	452	168.8	4522	1687	345	445	320	240	190	237
	150	SHCR300-150	452	168.8	6782	2531	395	545	320	240	190	261
	200	SHCR300-200	452	168.8	9043	3375	445	645	320	240	190	285
	300	SHCR300-300	452	168.8	13564	5063	545	845	320	240	190	333
400	100	SHCR400-100	572	192	5723	1923	427	527	367	270	220	310
	150	SHCR400-150	572	192	8584	2885	477	627	367	270	220	342
	200	SHCR400-200	572	192	11445	3847	527	727	367	270	220	374
	300	SHCR400-300	572	192	17168	5770	627	927	367	270	220	438
	500	SHCR500-100	707	254	7065	2543	474	574	400	300	240	433
500	150	SHCR500-150	707	254	10597	3815	524	674	400	300	240	478
	200	SHCR500-200	707	254	14130	5087	574	774	400	300	240	521
	300	SHCR500-300	707	254	21195	7630	674	974	400	300	240	613
	500	SHCR500-500	707	254	35325	12717	874	1374	400	300	240	792
	100	SHCR600-100	855	283	8548	2826	484	584	445	330	270	550
600	150	SHCR600-150	855	283	12823	4239	534	684	445	330	270	601
	200	SHCR600-200	855	283	17097	5652	584	784	445	330	270	668
	300	SHCR600-300	855	283	25646	8478	684	984	445	330	270	711
	500	SHCR600-500	855	283	42723	14130	884	1384	445	330	270	904
	100	SHCR800-100	1194	390	11940	3901	539	639	550	390	320	872
800	150	SHCR800-150	1194	390	17910	5852	589	739	550	390	320	988
	200	SHCR800-200	1194	390	23880	7803	639	839	550	390	320	1092
	300	SHCR800-300	1194	390	35820	11704	739	1039	550	390	320	1176
	500	SHCR800-500	1194	390	59699	19507	939	1439	550	390	320	1355
	100	SHCR1000-100	1451	490	14515	4898	614	714	600	430	350	1105
1000	150	SHCR1000-150	1451	490	21772	7348	664	814	600	430	350	1210
	200	SHCR1000-200	1451	490	29029	9797	714	914	600	430	350	1315
	300	SHCR1000-300	1451	490	43544	14695	814	1114	600	430	350	1528
	100	SHCR1500-100	2205	949	22050	9491	835	935	790	530	400	3070
	200	SHCR1500-200	2205	949	44101	18981	935	1135	790	530	400	3550
1500	300	SHCR1500-300	2205	949	66151	28472	1035	1335	790	530	400	3940
	500	SHCR1500-500	2205	949	110252	47453	1235	1735	790	530	400	5450
	100	SHCR2000-100	2921	11123	29210	11124	953	1053	910	610	480	4790
	200	SHCR2000-200	2921	11123	58420	22247	1053	1253	910	610	480	5210
	300	SHCR2000-300	2921	11123	87630	33371	1153	1453	910	610	480	5715
2000	500	SHCR2000-500	2921	11123	146050	55618	1353	1853	910	480	7820	



HYDRAULIC HAND PUMP

Model no: S 39 / S 392

FOR CYLINDER: SINGLE ACTING
 MAXIMUM PRESSURE: 700 BAR



Model no: S 39 / S 392

USABLE OIL CAPACITY: 672 (CM2)
 FOR CYLINDER: SINGLE ACTING
 MAXIMUM PRESSURE: 700 BAR
 USABLE OIL CAPACITY: 2200 (CM2)

Model no: S 84

FOR CYLINDER: DOUBLE ACTING
 MAXIMUM PRESSURE: 700 BAR
 USABLE OIL CAPACITY: 2200 (CM2)



Model no: S 462

FOR CYLINDER: SINGLE ACTING
 MAXIMUM PRESSURE: 700 BAR
 USABLE OIL CAPACITY: 7423 (CM2)

Model no: S 464

FOR CYLINDER: DOUBLE ACTING
 MAXIMUM PRESSURE: 700 BAR
 USABLE OIL CAPACITY: 7423 (CM2)



Torque

1Nm=0.737Ft.lb
 1Ft.lb=1.356Nm
 1kgm=7.233Ft.lb=9.8Nm

Pressure

1MPa=1N/mm2 1MPa=10.2kg/cm2
 1MPa=10bar 1MPa=145psi
 1bar=14.5psi 1psi=0.069bar

Weight

1Ton=9.8KN 1KN=0.102Ton
 1N=0.102Kg 1Kg=9.8N
 1Kg=2.204lb=9.8N

Force

1Kg=2.2046lb
 1lb=0.4536kg
 1Ton=1000Kg
 1KN=0.102Ton

Length

1mm=0.039in 1in=25.4mm
 1m=3.281Ft 1Ft=0.305m

Power

1HP=0.746KW
 1KW=1.34HP



HP Series-Single Acting Aluminum High Pressure Manual Pump

The system boasts a reasonable structure and design, combining functionality with aesthetic appeal while maintaining portability for ease of transport. The incorporation of a double-speed design enhances efficiency by up to 80%, enabling faster completion of tasks.

Safety is prioritized with a built-in safety valve for overload protection, ensuring operator and equipment safety during operation. The large capacity oil tank accommodates various models of cylinders and tools, enhancing versatility and usability across different application SNS.

The pump body constructed from Al-Ti alloy offers a lightweight yet durable solution, providing high strength, corrosion resistance, and shock absorption capabilities. With a maximum working pressure of 280MPa, the system delivers robust performance under demanding conditions.

Additionally, the inclusion of a built-in precise high/low pressure switching valve ensures stable and reliable operation, further enhancing safety and control during lifting tasks. This comprehensive set of features makes the system a reliable and efficient solution for a wide range of lifting and hydraulic applications.

Model	Output poSRTC	Pressure(MPa)		Flow(mL/stroke)		Oil tank (cm ³)	Dimension (mm)	Weight(KG)
		High	Low	High	Low			
HP1000	NPT3/8	1000	2	1.2	24	2000	556*124*160	8.8
HP1600	G1/4	1600	2	1.2	24	2000	556*124*160	8.8
HP2500	G1/4	2500	2	1.2	24	2000	556*124*160	8.8
HP2800	G1/4	2800	2	1.2	24	2000	556*124*160	8.8



SMCS Series Variable Frequency Synchronous Control System

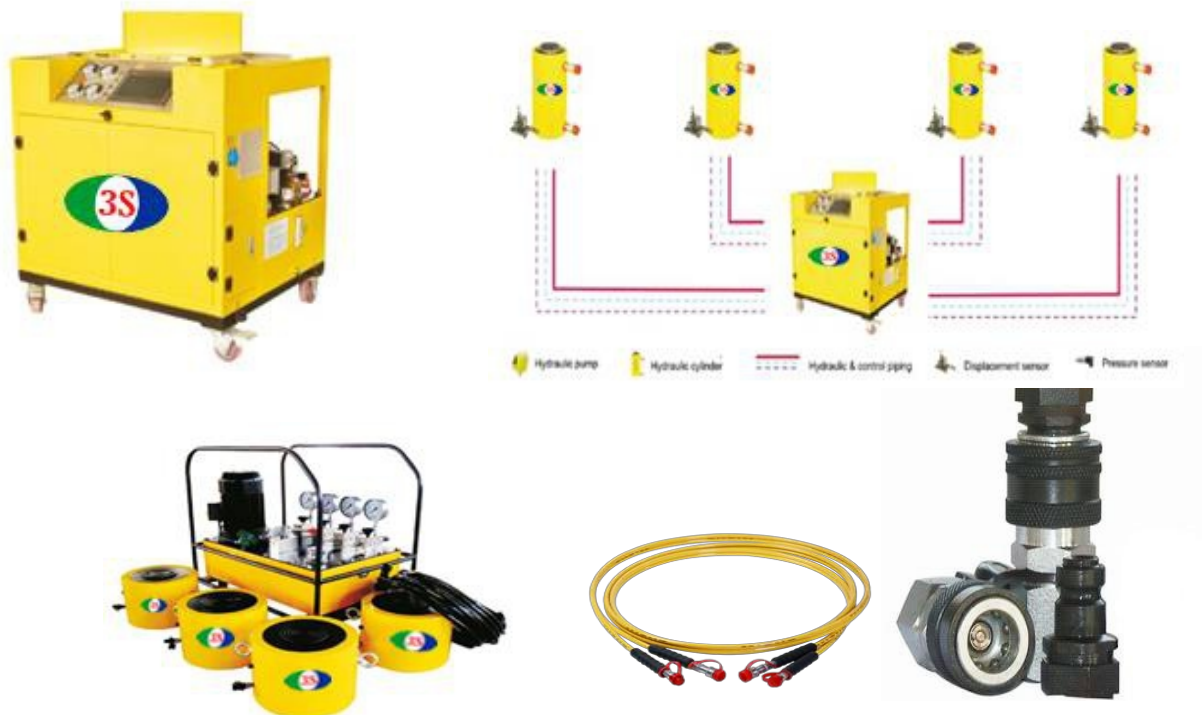
The adoption of a double plunger pump system enables rapid leveling and stable lifting of heavy load SHCG, ensuring efficient operation even under demanding conditions. Computer-controlled functionality eliminates the need for human intervention, allowing for automatic testing of lifting status, enhancing safety and efficiency.

With high precision capabilities up to 0.5mm, synchronous lifting and lowering are meticulously controlled, ensuring precise positioning of the load. Each control point operates independently, offering flexibility to control individual or multiple points separately, catering to diverse lifting requirements.

Utilizing components from renowned international brand SNSHCG and imported seals, the system ensures durability and reliability. It is compatible with both single and double-acting cylinders, providing versatility in application.

Quick connectors streamline hydraulic piping, cylinder, and pump connection SNS, simplifying operation and maintenance procedures. Optional displacement and pressure sensors enable real-time monitoring, enhancing control and safety.

The incorporation of VFDM (Variable Frequency Drive Motor) technology allows for continuous flow adjustment by dynamically changing motor speed. This feature SN Sure superior stability and reliability compared to similar systems, providing a true sense of continuous flow adjustment for precise control over lifting operation SNS.

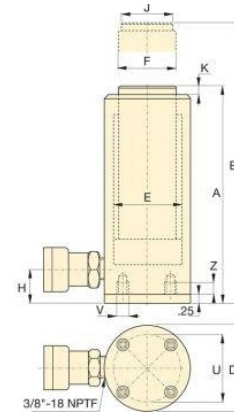




SRAC SERIES, SINGLE ACTING, SPRING RETURN

The advancements in technology you mentioned seem promising! 3S SRAC Series high-pressure aluminum hydraulic cylinders sound like they're pushing the boundaries of what's possible in cylinder application SNS. With their focus on high-strength coatings, seal design, and innovative bearing materials, they likely offer enhanced performance, durability, and reliability. It's exciting to see how such advancements can revolutionize various industries reliant on hydraulic systems.

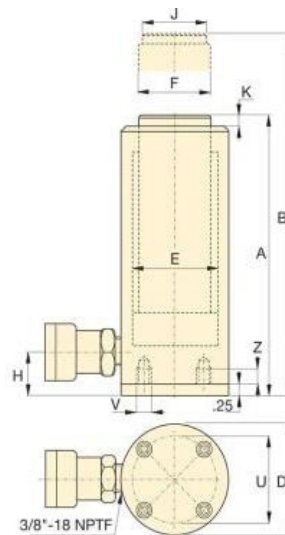
Model Number	Cylinder Capacity (kN)	Stroke (mm)	Collapsed Height (mm)
SRAC102	88	50	154
SRAC106	88	150	254
SRAC152	137	50	161
SRAC156	137	150	261
SRAC202	218	50	174
SRAC206	218	150	274
SRAC302	309	50	181
SRAC306	309	150	281
SRAC502	496	50	186
SRAC506	496	150	286
SRAC1004	1002	100	271
SRAC1006	1002	150	321
SRAC1008	1002	200	371
SRAC1506	1589	150	343



SRACL SERIES, WITH LOCK NUT, SPRING RETURN

The SRACL-Series Lightweight Lock Nut Hydraulic Cylinders sound like a game-changer, especially for applications where portability and safety are paramount. Being single-acting with a spring return mechanism adds to their efficiency and ease of use. The inclusion of a lock nut for mechanical load holding ensures added safety during operations, which is crucial in high-pressure hydraulic systems. And of course, their lightweight design compared to steel equivalents makes them easier to transport and handle, potentially reducing setup time and labor costs. Overall, it sounds like a versatile and reliable solution for a range of hydraulic applications.

Model Number	Cylinder Capacity (kN)	Stroke (mm)	Collapsed Height (mm)
SRACL202	218	50	224
SRACL206	218	150	324
SRACL302	309	50	231
SRACL306	309	150	331
SRACL502	496	50	236
SRACL506	496	150	336
SRACL5010	496	250	436
SRACL1002	1002	50	296
SRACL1006	1002	150	396
SRACL10010	1002	250	496
SRACL1502	1589	50	323
SRACL1504	1589	100	373
SRACL1506	1589	150	423
SRACL15010	1589	250	523

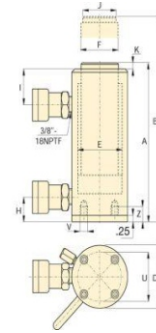




SRAR SERIES, DOUBLE ACTING, ALLUMINIUM HYDRAULIC CYLINDER

The Yellow Stone SRAR Series high-pressure aluminum hydraulic cylinders seem like a significant advancement in hydraulic technology. By leveraging the latest alloy technology, high -strength coatings, seal design, and bearing materials, these cylinders likely offer enhanced performance, durability, and reliability. The use of aluminum also suggests they are lighter than traditional steel cylinders, which can improve portability and ease of handling without sacrificing strength or functionality

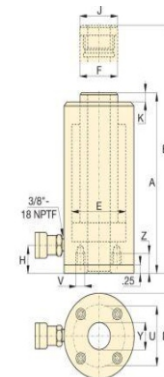
Model Number	Cylinder Capacity (kN)	Stroke (mm)	Collapsed Height (mm)
SRAR202	218	50	189
SRAR206	218	150	289
SRAR302	309	50	201
SRAR306	309	150	301
SRAR502	496	50	201
SRAR504	496	100	251
SRAR506	496	150	301
SRAR1004	1002	100	301
SRAR1006	1002	150	351
SRAR1008	1002	200	401
SRAR1506	1589	150	348
SRAR15010	1589	250	448



SRACH SERIES Single Acting Aluminum Hollow Plunger Hydraulic Cylinder

The SRACH-Series Aluminum Hollow Hydraulic Cylinders sound like versatile tools, offering both push and pull forces. Their lightweight aluminum construction makes them more portable compared to steel alternatives, which can be particularly beneficial for applications where mobility is essential. The inclusion of a high-strength return spring for rapid retraction adds to their efficiency and usability, making them a valuable asset for various hydraulic system setups.

Model Number	Cylinder Capacity (kN)	Stroke (mm)	Collapsed Height (mm)
SRACH202	229	50	188
SRACH206	229	150	315
SRACH302	358	50	208
SRACH306	358	150	333
SRACH604	596	100	315
SRACH606	596	150	380
SRACH1002	1157	50	258
SRACH1006	1157	150	391
SRACH10010	1157	250	527
SRACH1502	1588	50	280
SRACH1506	1588	150	430
SRACH15010	1588	250	570

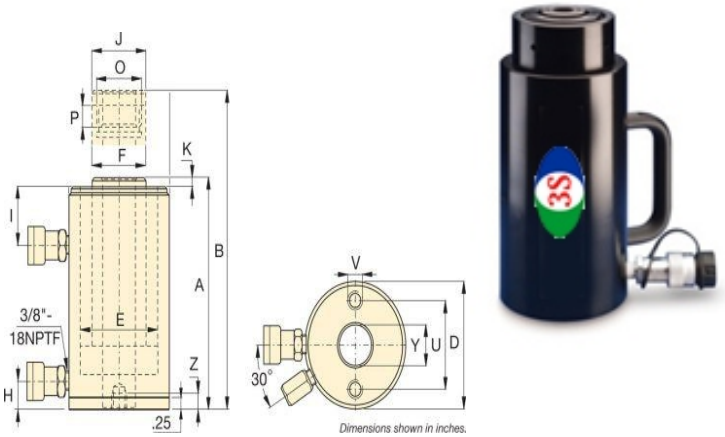




SRARH SERIES Double Acting Aluminum Hollow Plunger Hydraulic Cylinder

The SRARH-Series Aluminum Hollow Hydraulic Cylinders seem to offer even more advantages over their single-acting counterparts with their lighter weight and shorter collapsed height. These features could be particularly advantageous in scenarios where space constraints or weight considerations are critical factors. Their ability to deliver comparable performance while being more compact and light weight further underscores their suitability for a wide range of hydraulic applications.

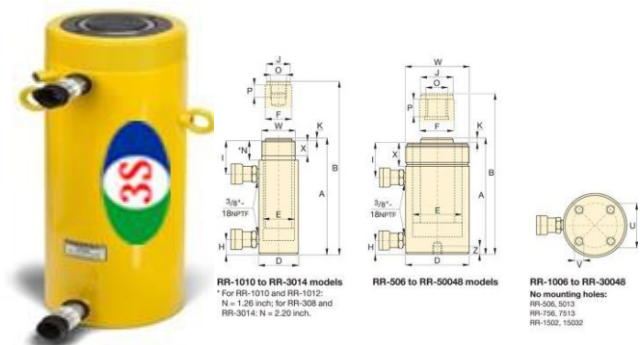
Model Number	Cylinder Capacity (kN)		Stroke (mm)	Collapsed Height (mm)
	Push	Pull		
SRARH302	359	187	50	209
SRARH306	359	187	150	309
SRARH3010	359	187	250	409
SRARH602	595	264	50	246
SRARH606	595	264	150	346
SRARH6010	595	264	250	446
SRARH1002	1001	568	50	254
SRARH1006	1001	568	150	354
SRARH10010	1001	568	250	454
SRARH1502	1489	748	50	264
SRARH1506	1489	748	150	364
SRARH15010	1489	748	250	464



SRR SERIES Double-Acting, General Purpose Hydraulic Cylinder

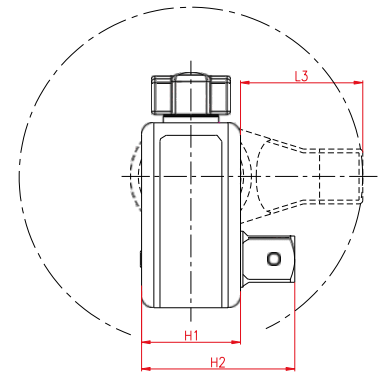
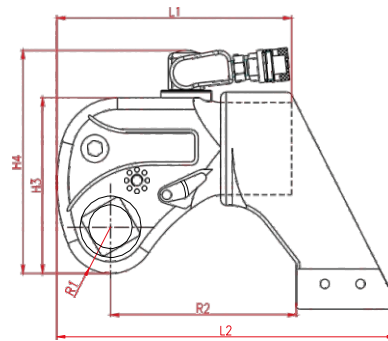
The RR-Series Hydraulic Cylinders sound like precision instruments, especially with their double-acting design that enables precise control over both the advance and retract speeds of the plunger. This level of control is essential in applications where accuracy and repeatability are paramount, such as in higher-cycle and longer stroke operations. By utilizing hydraulic force for both advancing and retracting the plunger, these cylinders offer versatility and reliability, making them well-suited for demanding industrial settings where performance is critical.

Model Number	Cylinder Capacity (kN)		Stroke (mm)	Collapsed Height (mm)
	Push	Pull		
SRR1010	101	33	254	409
SRR1012	101	33	305	457
SRR308	295	53	209	394
SRR3014	295	53	368	549
SRR506	498	103	156	331
SRR5013	498	103	334	509
SRR1006	933	435	168	357
SRR10013	933	435	333	524
SRR1506	1386	668	156	385
SRR15013	1386	668	333	582
SRR2006	1995	1017	152	430
SRR20013	1995	1017	330	608



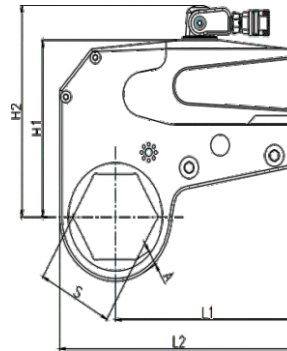
SXT SERIES HYDRAULIC SQUARE DRIVE TORQUE WRENCH

Model	07SSXT	1SSXT	2SSXT	3SSXT	5SSXT	8SSXT	10SSXT	15SSXT	20SSXT	25SSXT	35SSXT	45SSXT	50SSXT	65SSXT	75SSXT	95SSXT
Torque(Nm)	185 1852	186 1864	311 3107	443 4431	746 7461	1082 10816	1521 15217	2027 20271	2614 26148	3493 34928	4963 49627	6196 61963	7097 70976	8451 84512	10512 105120	14085 140848
Weight(Kg)	1.6	2.7	3.6	4.8	8.8	12	14.5	19	25	37.5	42	49	58	66	81	155
L1 (mm)	104	138	149	168	207	226	250	281	304	331	390	397	418	471	507	520
L2 (mm)	151	194	213	244	296	326	366	402	442	483	558	570	596	660	729	758
L3 (mm)	50	63	70	79	99	110	120	132	146	158	177	188	195	204	240	246
H1 (mm)	42	50	60	70	80	90	100	112	120	138	150	163	166	182	190	210
H2 (mm)	63	73	87	99	124	133	143	165	183	202	219	226	236	263	291	307
H3 (mm)	76	96	111	125	152	170	186	208	226	250	282	295	300	348	392	415
H4 (mm)	106	140	157	165	193	211	227	249	267	291	323	360	366	407	447	473
R1 (mm)	20	26	29	34	40	46	50	56	60	66	77	79	82	95	108	115
R2 (mm)	82	107	112	132	162	178	199	218	240	260	298	303	325	345	380	400
Square Drive	3/4"	3/4"	1"	1"	1 1/2"	1 1/2"	1 1/2"	2" 2 1/2"	2 1/2"	2 1/2"	2 1/2"	2 1/2"	3"	3"	3 1/2"	4"



SU SERIES HYDRAULIC SQUARE DRIVE TORQUE WRENCH

MODEL NO	SU 0.75	SU 1	SU 2	SU 3	SU 5	SU 7	SU 11	SU 15	SU 20	SU 27	SU 57
Square Drive	¾"	¾"	¾"	1"	1.1/2"	1.1/2"	1.1/2"	2.1/2"	2.1/2"	2.1/2"	2.1/2"
Min. Torque N-m (ft/lbs)	99	128	168	444	770	1006	1500	2013	2634	3700	7913
	77	91	127	330	565	740	1100	1485	1940	2720	5800
Min. Torque N-m (ft/lbs)	1046	1243	1727	4539	7637	10064	14997	20128	28139	37118	79129
	770	914	1270	3330	5600	7400	11000	14845	20625	27200	58000
Output Accuracy	+/-3%	+/-3%	+/-3%	+/-3%	+/-3%	+/-3%	+/-3%	+/-3%	+/-3%	+/-3%	+/-3%
Repeatability	100%	100%	100%	100%	100%	100%	100%	100%	100%	100%	100%
Duty Cycle	100%	100%	100%	100%	100%	100%	100%	100%	100%	100%	100%
Total Weight Kg / Lbs	1.0	1.25	2.50	4.20	8.40	8.90	13.6	22.0	28.5	32.7	60.8
	(2.20)	(2.75)	(5.80)	(9.30)	(18.60)	(19.60)	(30.00)	(48.5)	(62.7)	(72)	(133.7)



XL SERIES HYDRAULIC SQUARE DRIVE TORQUE WRENCH

Model	1XL	3 XL	4 XL	6 XL	8 XL	15 XL	25 XL	35 XL	50 XL	95 XL
Torque (Nm)	225 2252	333 3337	523 5227	753 7537	1175 11753	1932 19322	3262 32621	5223 52235	7517 75172	14616 146167
A/F (mm)	36-60	41-60	46-80	55-85	70-105	80-115	90-130	120-145	130-180	155-190
Weight (kg)	2.1	3.7	4.5	7.5	8.9	17.3	25.2	35.5	47.8	150
L1 (mm)	120.5	144	156	179	207	237	273	338	382	492
L2 (mm)	156	185	202	232	270	309	361	447	517	665
L3 (mm)	191	223	232	256	291	335	383	456	539	670
H1 (mm)	100	113	119	145	168	197	230	280	320	400
H2 (mm)	144.5	156	161	187	210	237	272	345	383	458
H3 (mm)	142	148	152	179	200	227	255	294	400	425
W1 (mm)	34	36	42	45	53	64	70	84	94	160
W2 (mm)	36	38	46	49	57	68	78	92	102	168
W3 (mm)	50	55	60	65	75	90	100	118	140	180
A (mm)	9	10	12	13	14.5	19	21.3	25	34	62



XL SERIES HYDRAULIC SQUARE DRIVE TORQUE WRENCH

Model	Torque range(Nm)	Nut size(mm)	Head weight(kg)	Cassette weight(kg)	L(mm)	H1(mm)	H2(mm)	W1(mm)	W2(mm)
07SXL	106-1058	27-41	0.6	0.9	138-142	84	114	23	39
2SXL	231-2316	30-55	1	1.6	176-181	102	131	32	51
	248-2479	60		1.8	183.5	107	137		
3SXL	337-3369	41-65	1.4	2.6	204-211	122	148	36	57
4SXL	531-5309	46-65	2	4.2	232-238	136	174	42	66
	577-5774	70-80		4.7	240-247	145	183		
6SXL	761-7613	50-75	2.8	5.5	257-264	160	195	47	75
	796-7959	80-85		5.9	267	165	200		
8SXL	1093-10937	55-95	3.5	8	280-294	170	206	53	83
	1194-11946	100-110		8.6	308-311	181	217		
14SXL	1866-18656	70-105	5.7	11.4	327	204	238	64	99
	1931-19308	110-120		12.5	333	209	243		
18SXL	2506-25061	80-135	7.4	12.9	380-400	239	269	68	107
20SXL	3061-30611	90-135	10.5	20.4	406-420	249	304	70	110
	3146-31462	140-145		21.3	427	255	310		
30SXL	4179-41789	105-155	11.8	30.7	455-462	281	326	85	132
	4430-44297	160-180		34	478	293	338		





SPW-Series Pneumatic Torque Wrenches



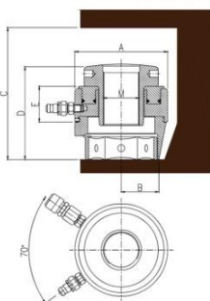
3S new SPW-Series Pneumatic Torque Wrenches sound like a game-changer for industries requiring precise and efficient bolting solutions. Designed to withstand rugged job site conditions, these tools offer fast, safe, and straightforward fastening capabilities, making them ideal for applications demanding controlled bolting solutions.

With a torque range of up to 8,100 Nm (6,000 ft. lbs.), these pneumatic torque wrenches are powerful enough to handle the heavy-duty fastening requirements typically encountered in industries like mining, power generation, and oil & gas. Their robust construction ensures durability and reliability, crucial qualities for tools operating in demanding environments. Overall, the SPW-Series seems poised to streamline operations and enhance productivity in industries reliant on secure and precise fastenings.

MODEL NO.	Min (N.M)	Max (N.M)	S (mm)	D (mm)	M (mm)	L (mm)	K (mm)	Weight (Kg)	Speed rpm
SPW- 450	130	450	3/4i¼,	74	167	297	195	5.3	40
SPW - 950	290	950	3/4i¼,	78	172	302	195	5.4	20.5
SPW -1600	480	1640	1i¼,	78	214	344	195	6.9	11.5
SPW - 2000	490	2050	1i¼,	78	214	344	195	6.9	9
SPW - 3000	810	3100	1i¼,	88	254	384	195	9.7	5.5
SPW - 4000	1190	4300	1 1/2i¼,	99	254	384	195	9.7	3.8
SPW - 6000	1100	6200	1 1/2i¼,	113	283	413	195	15.1	2.7
SPW - 8000	1600	8000	1 1/2i¼,	120	292	422	195	16.8	1.9
SPW -1000	3700	10600	1 1/2i¼,	128	336	466	195	21.6	1.4
SPW -1200	3900	13500	1 1/2i¼,	128	336	466	195	21.6	1.1



SBT Series Single Stage Hydraulic Bolt Tensioner



Model	BoltdiameterM		Maxload KN	Oil pressure area mm ²	Weight Kg	A mm	B mm	C mm	D mm	E mm	F mm
	Inch	mm									
SBT1		16	226	1506	3.5	73	24	135	98	45	49
	3/4	18	226	1506	3.5	73	24	135	98	45	49
		20	226	1506	3.5	73.5	27	135	98	45	49.5
	7/8	22	226	1506	3	73.5	27	139	98	45	53
	1	24	226	1506	3	73.5	30	149	98	45	58.5
	11/8	27	226	1506	3	73.5	32	154	98	45	63.5
SBT2		30	455	3031	5	102	30	200	140	54	69
	11/4	33	455	3031	5	102	34	200	140	54	72
	13/8	36	455	3031	5	102	36	210	140	54	78
	11/2	39	455	3031	5	102	38	230	140	54	80
SBT3	11/2	39	803	5357	9	133	42	220	146	56	83.5
	15/8	42	803	5357	9	133	42	230	146	56	92.5
	13/4	45	803	5357	9	133	44	240	146	56	98
	17/8	48	803	5357	9	133	46	251	146	56	101
	2	52	803	5357	9	133	48	256	146	56	106
SBT4	17/8	48	1288	8591	15	163	50	268	168	58	108
	2	52	1288	8591	15	163	52	278	168	58	108
	21/4	56	1288	8591	15	163	54	303	168	58	118.5
		60	1288	8591	15	163	54	303	168	58	127
	21/2	64	1288	8591	15	163	58	322	168	58	130.5
SBT5	21/2	64	1978	13188	25	193	64	318	189	60	130.5
		68	1978	13188	25	193	72	322	189	60	138
	23/4	72	1978	13188	25	193	72	322	189	60	143
	3	76	1978	13188	25	193	74	326	189	60	153
SBT6	3	76	2717	18114	44	239	76	334	220	64	153
		80	2717	18114	44	239	76	338	220	64	155.5
	31/4	85	2717	18114	44	239	78	346	220	64	165.5
	31/2	90	2717	18114	44	239	78	354	220	64	174.5
	33/4	95	2717	18114	40.5	239	99	374	220	64	189.5
	4	100	2717	18114	40.5	239	105	379	220	64	200
SBT7	41/8	105	3841	25610	76	293	92	473	293	106	215
	41/4	110	3841	25610	76	293	100	478	293	106	215
	43/4	120	3841	25610	71	293	107	488	293	106	215
	5	125	3841	25610	71	293	111	498	293	106	215



Hydraulic Wrench Pump

The features of this equipment sound impressive:

Standard Slide Valve: A standard slide valve ensures stable reversing and enhances versatility, allowing for precise control over operations.

Two-Speed Flow Design: The two-speed flow design enables automatic switching between flow rates, optimizing efficiency and adaptability to varying working conditions.

Aluminum-Titanium Alloy Pump Body: The pump body made from an aluminum-titanium alloy offers lightweight construction, making it easy to transport and handle.

Brushless High-Power Motor: The brushless motor not only provides high power for efficient operation but also requires minimal maintenance and boasts a long lifespan, ensuring reliability over extended periods of use.

High-Performance Radiator: Equipped with a high-performance radiator, this equipment automatically activates the fan when the oil temperature reaches 35 degrees Celsius, ensuring consistent performance and preventing overheating during prolonged operations.

Integrated Circuit Electrical Box: The electrical box incorporates an integrated circuit, enabling seamless compatibility with various hydraulic tools such as hydraulic wrenches and pliers, enhancing overall functionality and versatility.

Overall, these features suggest that this equipment is designed to deliver reliable performance, ease of use, and longevity, making it well-suited for a range of industrial applications.

Model	Output port	Power	Pressure (MPa)		Flow(L/min)		Oiltank(L)	Dimension (mm)	Weight(KG)
			High	Low	High	Low			
SR 24-1	2X1/4NPT	220V1.1KW	70	6	0.8	6	8	394*300*420	27
SR 24-2	4X1/4NPT	220V1.1KW	70	6	0.8	6	8	394*300*420	27.5
SR 24-4	8X1/4NPT	220V1.1KW	70	6	0.8	6	8	394*300*420	28





HYDRAULIC NUT SPLITTER

No spark or flame: This indicates that it's safe for use in environments where sparks or flames could be hazardous, such as those with volatile materials.

Triangular chisel providing three cutting edges: This design likely enhances cutting efficiency and durability, allowing for more effective splitting of nuts or bolts.

Light and compact design for ease of operation and handling: This suggests that the tool is designed to be ergonomic and easy to maneuver, reducing operator fatigue.

Dedicated cylinder with minimal stroke for faster operation: This feature likely improves efficiency by reducing the time required for each splitting operation.

Rear end connection for ease of handling and safe connection: This indicates that there's a secure way to handle and connect the tool, ensuring safety during operation.

Laser marked for easy setting; no separate spacer for each nut: Laser marking provides precision and ease of use for setting up the tool, and the absence of separate spacers simplifies the process.

700 bar working pressure: This specifies the hydraulic pressure at which the tool operates, indicating its power and capability.

Calibrated system; no damage to stud/bolt threads: Calibration ensures accuracy and prevents damage to the components being worked on, preserving their integrity.

Overall, it seems like a well-designed and efficient tool for splitting nuts or bolts safely and effectively.



Model No.	Stud Size		Nut A/F Size		Load Ton	L Max. mm	D mm	T mm	W mm	Weight kg
	mm	inch	mm	inch						
SNS-012AH*	6 - 12	1/4 - 1/2	7 - 22	1/4 - 7/8	5	135	45	7	19	1.4
SNS-100AH*	11 - 16	7/10 - 5/8	13 - 24	1/2 - 1	10	196	73	9	19.5	3.4
SNS-105	11 - 22	7/16 - 7/8	16 - 36	5/8 - 1.7/16	25	256	106	13.5	36	9.6
SNS-200	22 - 32	7/8 - 1.1/4	36 - 51	1.7/16 - 2	25	256	108	14.5	38	10
SNS-204	32 - 38	1.1/4 - 1.1/2	46 - 60	1.13/16 - 2.3/8	50	329	154	18.2	50	25
SNS-210	35 - 45	1.3/8 - 1.3/4	57 - 70	2.1/4 - 2.3/4	50	357	154	20	51	26.5
SNS-308	45 - 57	1.3/4 - 2.1/4	70 - 89	2.3/4 - 3.1/2	100	395	200	21	74	49.5
SNS-314	50 - 64	2 - 2.1/2	79 - 88	3.1/8 - 3.7/8	100	496	202	23	78	52.5
SNS-404	64 - 70	2.1/2 - 2.3/4	95 - 108	3.3/4 - 4.1/4	150	450	246	32	89.5	81.5
SNS-500	76 - 83	3 - 3.1/4	114 - 127	4.1/2 - 5	150	456	250	32	98	87.5
SNS-506	83 - 89	3.1/4 - 3.1/2	124 - 136	4.7/8 - 5.3/8	150	470	250	40	105	93.5



HYDRAULIC FLANGE SPREEDER

Stubborn Joint Separation: 3S Wedge Spreaders and Flange Spreaders are designed specifically for separating stubborn joints without causing damage to the components. This is particularly useful for joints with ring grooves or those under external forces that make them difficult to separate.

Safety and Damage Prevention: Traditional methods like hammers, wedges, chain blocks, and lever bars can pose safety risks and potentially damage joint components. 3S Spreaders provide a safer alternative by utilizing controlled spreading forces to separate joints without causing harm.

Applications: These spreaders are versatile tools used in various applications such as shutdowns, testing, and pipeline maintenance. They can be part of Standard Kits or Maxi Kits, depending on the specific needs of the task at hand.

By offering controlled spreading forces and precision engineering, 3S Wedge Spreaders and Flange Spreaders provide an ideal solution for safely separating stubborn joints during maintenance and inspection procedures, minimizing risks and ensuring the integrity of the components involved.

FEATURES:

- Operated by hydraulic pump with rated pressure of 700 bar (10 000 psi) hydraulic pressure applied
- Required very small access gap of only 6mm
- Each step spreading distance is 20mm
- Maximum spreading distance is 61mm
- Use stepped blocks to increase wedge opening up to 81 mm
- Includes Safety blocks



Supplied with 3/8 male coupler and dust cap

Safe and reliable hydraulic system

SPREADING FORCE:

with 700 bar (10 000 psi) hydraulic pressure applied: 14 ton (140 KN) per tool

Maximum Spread	Tip Clearance	Maximum Spread	Maximum wt. Spread blocks	Tool Weight
14 (140 KN)	6mm	61mm	80mm	9.0 kg (15.4 lb)



LIFTING & BOLTING SOLUTIONS

YELLOW STONE ENGINEERING SOLUTIONS

📍 101, 1st Floor, Laxmi Narayan Rose Bldg.,
Chaturvedi Estate, Kalher Village, Bhiwandi, Thane – 421302.

👤 9769 193 793

✉ itssach1@gmail.com

🌐 [http://yellowstoneengg.com /](http://yellowstoneengg.com/)

